

*THIS IS  
RLX*

---



# PA SSI ON

---



U.S. model shown.

*The 2014 RLX is the new standard bearer of luxury and performance in the Acura portfolio. Our simple goal with the all-new RLX was to stir the driver in you, while satisfying your obvious taste for visionary innovation, craftsmanship and design.*



PERFORMANCE



*The all-new RLX is the ultimate expression of Acura. A 310-horsepower, 3.5-litre 24-valve, Direct Injection, i-VTEC® 6-cylinder engine with Variable Cylinder Management® (VCM®); Acura's revolutionary Precision All Wheel Steer™ system; sparkling Jewel Eye™ LED headlights—  
The RLX story begins.*

**VARIABLE CYLINDER MANAGEMENT®**

Variable Cylinder Management helps the RLX realize impressive fuel efficiency by automatically changing the V6 engine to run on six or three cylinders, depending on driving conditions. The cylinder activation is seamless and not felt by driver or passengers. The fuel consumption of as little as 6.4 litres/100 km on the highway however, is something you're sure to notice.

**6-SPEED SEQUENTIAL SPORTSHIFT® WITH PADDLE SHIFTERS**

Race-inspired paddle shifters specifically tuned to complement a quick-shifting 6-speed Sequential SportShift automatic transmission offer drivers the convenience of automatic shifting as well as the control and gratification that comes from changing gears manually.

---

*HANDLING MEETS  
HIGHER LEARNING*



**PRECISION ALL WHEEL STEER™**

Acura's Precision All Wheel Steer system is designed to deliver an unprecedented level of precision and control. It's the world's first system that enables the rear wheels to adjust toe angles independently of each other—1.8 degrees, optimizing handling for smooth, stable and quick lane changes. Working in concert with Vehicle Stability Assist (VSA®) and the Agile Handling Assist dynamic braking system, Precision All Wheel Steer helps to enhance vehicle stability, maneuverability and control.



**AGILE HANDLING ASSIST**

Linear and precise, Agile Handling Assist complements the Precision All Wheel Steer™ system on the RLX to help improve cornering ability. This system pays further dividends by smoothing ride quality and making more pleasurable the tactile response of accelerating the RLX.

U.S. model shown.



# AMP LI FY

---

## KRELL AUDIO—A WORLD FIRST

The RLX Elite trim level offers the only in-car audio system designed and built by legendary Krell Industries. Audiophiles already know Krell for its fundamental research into amplifier design and performance. Every Krell component used in the RLX upholds their legacy, including an incredible 14-speaker array that delivers premium fidelity from a CD/AM/FM/SiriusXM™ tuner, MP3/Windows Media® Audio compatibility, auxiliary input jack, USB device connector and more—a direct result of Krell's discoveries in audio amplification. Unprecedented linearity and accuracy are the result.

# BRI LLIA NCE

---

## JEWEL EYE™ LED HEADLIGHTS— LEADING THE WAY

Acura's signature, new Jewel Eye LED headlights present a dual-stacked array with a total of eight separate high-intensity LED lamps and utilize ultra-reflective optical lenses to provide powerful, down-the-road illumination. Even when they are not illuminated, Acura Jewel Eye LED headlights give the RLX a sophisticated, gem-like appearance.

## LED TAIL LAMPS

Rear LED lighting further ensures crystal clear nighttime visibility and provides a striking exterior look.



U.S. model shown.





**ADAPTIVE CRUISE CONTROL (ACC)  
WITH LOW-SPEED FOLLOW\***

As with a conventional cruise-control system, the available Adaptive Cruise Control System with Low-Speed Follow allows you to set a desired speed, but it is also designed to keep a set distance from the car ahead of you, so you can enjoy cruise control even in light traffic conditions.

*\*Does not replace the driver's responsibility to exercise due care while driving.*

**LANE DEPARTURE  
WARNING (LDW) SYSTEM†**

Should the RLX begin to drift out of its lane without a turning signal being applied, the available Lane Departure Warning system is designed to trigger both an audible and visual warning to alert the driver. This constant connection between car and road is achieved through an onboard camera that is designed to monitor the vehicle's lane position at all times.

*†Does not replace the driver's responsibility to exercise due care while driving.*

**LANE KEEPING ASSIST  
SYSTEM† (LKAS)**

The available Acura Lane Keeping Assist System works proactively to keep the vehicle inside the lane during normal driving conditions. If the car begins to cross lane markings unintentionally, the Lane Keeping Assist System is engineered to apply light steering torque to return the vehicle to the centre of the lane while a continuous beep inside the cabin is provided to alert the driver.

*†Does not replace the driver's responsibility to exercise due care while driving.*





**ACURA NAVIGATION SYSTEM  
WITH VOICE RECOGNITION™**

The satellite-linked navigation system, found on the RLX Tech and Elite, can pinpoint your location almost anywhere in North America or access its onboard search directory. The system is equipped with bilingual voice recognition software and offers real-time directions by either voice or moving-map display. Just ask and the system can show you the most direct route to your destination or, with the Zagat Survey® ratings, help you find a restaurant based on the type of cuisine you're craving.

**MULTI-ANGLE REARVIEW CAMERA†  
WITH DYNAMIC GUIDELINES**

This innovation provides a clear view from behind your vehicle. The image appears on the RLX cabin's colour information display and the navigation system display on the RLX Tech or Elite models. Even if the navigation system is turned off, the camera is activated automatically when you engage reverse—eyes in the back of your head, only better.

*†Does not replace the driver's responsibility to exercise due care while driving.*

**BLIND SPOT INFORMATION  
(BSI) SYSTEM‡**

The RLX expands your field of vision by providing information about vehicles that are in, or about to enter your blind spot when you're passing, being passed, merging or changing lanes. The available Blind Spot Information system uses radar technology that is designed to detect objects moving as slow as ten kilometres per hour.

*‡Does not replace the driver's responsibility to exercise due care while driving.*

ACURALINK™

A NEW BAR FOR CONNECTIVITY

AcuraLink

Available to RLX drivers is the all-new AcuraLink connectivity system, and with it an unprecedented combination of technology and convenience. Using both embedded two-way communications and web-enabled devices, AcuraLink curates a truly digital experience with your RLX.

#### NAVIGATION

AcuraLink brings some impressive additions to your Acura Navigation System like Real-Time Traffic™\*\* with all-new surface street traffic information. You'll also be able to request points of interest via a live concierge agent and have the route sent directly to your navigation screen. Or map locations yourself and upload them to your screen via the MyAcura website, or AcuraLink Connect app\*.

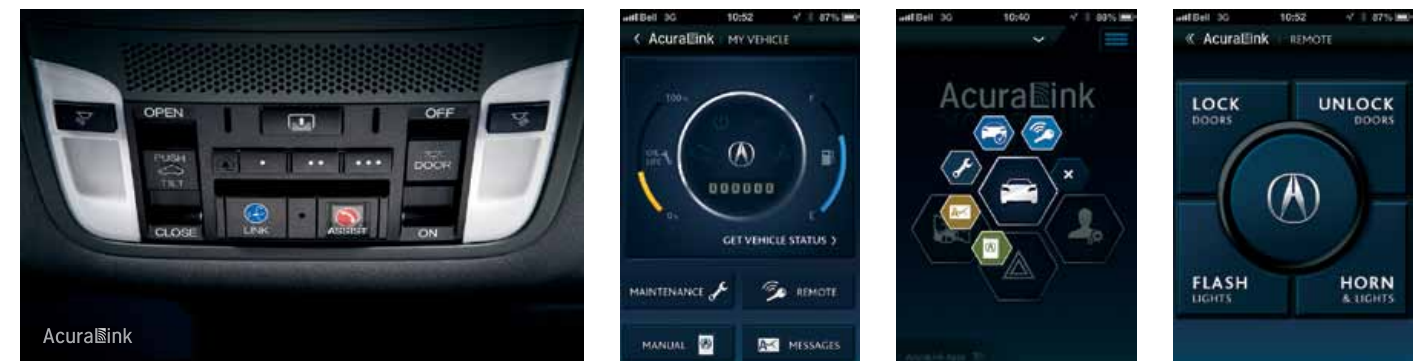
#### ENTERTAINMENT

AcuraLink makes the RLX the first Acura to feature Aha™ by Harman, a cloud-based interface that provides you with thousands of customizable media and connectivity choices. The AcuraLink Streams app\* lets you access your desired content on the go. Once you have selected your favourite stations, you can connect your smartphone with your RLX through your on-board touchscreen and have immediate access to your favourite music, internet radio, podcasts, audiobooks and even have your Facebook® and Twitter feeds read out loud as you drive.

#### REMOTE CONTROL

With the AcuraLink Connect app\*, or MyAcura website, you no longer need to be in your RLX to connect with it. Using your web-enabled device, you can remotely lock and unlock doors; use the car finder feature in a crowded lot; even check things such as fuel level, tire pressure and odometer reading from your virtual dashboard. And the connection goes both ways as your RLX can send messages to you via the mobile app, alerting you of an alarm notification for example, even if you're out of town.

An On-Demand Multi-Use Display™ touchscreen and one-touch dedicated Link and Assist buttons in the vehicle easily give you access to an array of customizable media, convenience features, emergency services and even 24-hour live concierge operators. The AcuraLink Connect app\* and MyAcura website allow you to connect remotely with your RLX in ways like never before.



#### EMERGENCY

In the event of an airbag deployment, AcuraLink automatically sends a signal for immediate assistance to your location†. The on-board one-touch Assist button also gives you access to live operator assistance in the case of non-collision emergencies.

#### MAINTENANCE

Not only will you be notified when your next service is due via the Maintenance Minder™, but the new Automated Appointments™ feature allows you to schedule an appointment with your favourite, or local, Acura dealer directly through the AcuraLink system.

#### LIVE CONCIERGE

The AcuraLink Premium package gives you access to the most personalized feature of all—access to live concierge agents. One touch puts you in direct voice contact with an Acura concierge who will assist you with virtually anything from finding a point of interest; booking dinner, hotel, or flight reservations; even searching the web for answers for you while you drive.

\*Available on eligible devices.  
\*\*Real-Time Traffic™ is only available in 13 of Canada's largest metropolitan areas and is dependent upon data location reporting of connected vehicles.  
†Vehicle or the compatible smartphone tethered via the vehicle's HandsFreeLink Bluetooth connection needs to have cellular reception.

*Intelligent design has graced the all-new Acura RLX with a spacious, comfortable and balanced cabin typically associated with a much larger luxury sedan. Finishes in the form of available soft, Milano leather-trimmed seating surfaces and wood accents complete the cabin's welcoming aura.*

**12-WAY POWERED AND HEATED FRONT SEATING**

Finding the ideal driving position is easy with the standard heated and 12-way power adjustable front seats, including 4-way power lumbar support and programmable driver recognition memory. Ventilated front seats are available for heating and cooling on the RLX Elite.

**HEATED 2ND-ROW SEATING**

An additional measure of comfort on the RLX Elite comes from the available heated rear seats. Featuring three heat settings, each seat offers a little extra cold-weather comfort for rear-seat passengers.

**HEATED STEERING WHEEL**

No less enticing is the availability of a heated, leather-wrapped steering wheel—a touch of more luxury for those cold winter morning drives.

**ACTIVE NOISE CANCELLATION (ANC)**

Discreet microphones inside the RLX cabin monitor low-frequency noise and, when detected, the Active Noise Cancellation system counteracts and cancels the disturbance with an equivalent waveform using the sound system. And acoustic glass further cocoons cabin occupants from auditory intrusion.

**ACTIVE SOUND CONTROL (ASC)**

Operating in unison with the Active Noise Cancellation system, Active Sound Control uses in-cabin microphones and complex electronic sensors to mitigate noise created by the engine as it goes through its rpm cycle.



## SAFETY

*Owning and driving a luxury automobile starts with the peace of mind that advanced safety features and innovative safety technologies afford. The RLX was meticulously designed with safety in mind, for driver and passengers alike.*



### ACE™ BODY STRUCTURE

The innovative Advanced Compatibility Engineering™ (ACE) body structure utilizes a high-tensile, high-efficiency steel body structure and is engineered to help provide enhanced protection from a multi-directional collision. ACE reduces the force of a frontal impact by absorbing energy over a large area and dispersing it away from you and other occupants of the cabin. ACE is also designed to help reduce occupant injuries caused by misalignment in collisions between vehicles of different sizes.

### VEHICLE STABILITY ASSIST (VSA®)

VSA with Traction Control automatically detects and corrects understeer or oversteer situations, sometimes before you're aware there's a problem. The system is designed to intuitively analyze conditions and reduce throttle and/or apply braking to individual wheels. Should a loss of traction occur on a slippery surface, Traction Control will help ensure you get underway safely.

### ANTI-LOCK BRAKES

The 4-wheel Anti-lock Braking System (ABS) helps you maintain steering control when braking hard on wet, slippery or loose surfaces, while Electronic Brake-force Distribution (EBD) and Brake Assist are designed to balance braking forces at each wheel to help compensate for cargo and passenger weight distribution inside the cabin.

### AIRBAGS

A significant level of safety is achieved with seven standard airbags. The cabin of the RLX features side curtain airbags with a sensor to deploy in the event of a rollover and dual-stage, multiple-threshold front airbags (SRS). Plus, it has Smartvent™ side airbags, which are designed to deploy safely in a manner that mitigates the risk of injury to out-of-position or smaller occupants as well as a driver's side knee airbag.

U.S. model shown.

## RLX

### SPECIFICATIONS

ENGINE	
Engine	3.5-litre, 24-valve, Direct Injection SOHC, i-VTEC® V6
Horsepower	310 hp @ 6500 rpm
Torque	272 lb.-ft. @ 4500 rpm
Displacement	3471 cc
Bore and stroke	89 x 93 mm
Emissions	Tier 2 Bin 5
Compression ratio	11.5:1
Variable Cylinder Management® (VCM®)	
Recommended fuel	Premium unleaded
Horsepower & Torque (SAE net Rev. 08/04, SAE J1349)	

DRIVETRAIN
6-speed automatic transmission with Sequential SportShift® paddle shifters, Grade Logic Control and Sport mode
Drive-by-Wire Throttle System™
Front-wheel drive

CHASSIS
18" alloy wheels
Agile Handling Assist
Amplitude Reactive Dampers
Double-wishbone, lower double-joint front suspension
Multi-link rear suspension
Power-assisted, solid rear disc brakes
Power-assisted, ventilated front disc brakes
Precision All Wheel Steer™ system
Tires: P245/45 R18
Electric power-assisted rack-and-pinion steering (EPS)

CAPACITIES	
Cargo volume	423 litres
Fuel tank capacity	70 litres
Passenger volume	2891 litres

SAFETY
Advanced Compatibility Engineering™ (ACE™) body structure
Anti-lock Braking System (ABS) with Electronic Brake-force Distribution (EBD) and Brake Assist
Driver's side knee airbag
Dual-stage, multiple-threshold front airbags (SRS)
Smartvent™ side airbags
Side curtain airbags
Immobilizer Theft-Deterrent System
Lower Anchors and Tethers for Children (LATCH) child-seat mounting system
Security system
Tire repair kit
Tire Pressure Monitoring System (TPMS) with location and pressure indicators
Vehicle Stability Assist (VSA®) with Traction Control

EXTERIOR
Heated power-adjusting side mirrors with driver recognition, reverse gear tilt-down, integrated turn indicators and expanded view driver's mirror
Front splash guards
Jewel Eye™ LED headlights
Headlamp washers
Variable intermittent windshield wipers
LED tail lamps
Power moonroof with tilt feature, auto-open/close, auto-reverse, key-off operation and sliding shade

COMFORT & CONVENIENCE
Active Noise Cancellation (ANC)/Active Sound Control (ASC)
Ambient cabin and door handle lighting
Ambient driver's and front passenger's footwell lighting
Auto-dimming rearview mirror
Automatic climate control system
Capless fueling system
Centre console
Electronic Parking Brake (EPB) with automatic brake hold
Electronically-locking glove compartment
Forward Collision Warning (FCW) system**
HandsFreeLink™-Bluetooth® wireless mobile phone interface†† with steering wheel-mounted controls
HomeLink® remote system***
Keyless Access System
Lane Departure Warning (LDW) system**
Multi-angle rearview camera** with dynamic guidelines
Multi-Information Display (MID) with DOT display
On-Demand Multi-Use Display™
One-touch directional signals
Power tilt and telescoping steering column
Power windows with driver's and front passenger's auto-up/down, auto-reverse and key-off operation
Pushbutton start
Rear-seat centre armrest with locking trunk pass-through
Steering wheel-mounted audio, phone, MID and cruise controls

ENTERTAINMENT
Acura/ELS Surround® Premium Audio System with CD/AM/FM/SiriusXM™† tuner, MP3/Windows Media® Audio compatibility, auxiliary input jack, USB device connector and 10 speakers
Bluetooth® Streaming Audio††
E-mail function†
SMS text message function‡

SEATING & TRIM
12-way power adjustable driver's and front passenger's seat including 4-way power lumbar support
Driver's seat memory settings
Heated front seats
Leather-wrapped steering wheel and shift knob
Silver-plated interior trim

EXTERIOR DIMENSIONS	
Curb weight (RLX/Technology/Elite)	1788/1798/1817 kg
Gross vehicle weight rating	2265 kg
Ground clearance – full-load	96 mm
Height	1465 mm
Length	4982 mm
Track – front/rear	1632/1630 mm
Turning radius, curb to curb	12.3 m
Wheelbase	2850 mm
Width (excluding sideview mirrors)	1890 mm

INTERIOR DIMENSIONS	
Headroom – front/rear	954/937 mm
Hip room – front/rear	1419/1385 mm
Legroom – front/rear	1074/985 mm
Shoulder room – front/rear	1514/1449 mm
Seating capacity	5

FUEL ECONOMY	
City	10.5 litres/100 km*
Highway	6.4 litres/100 km*
Combined	8.6 litres/100 km*

PACKAGES
<b>TECHNOLOGY PACKAGE</b> <i>(Adds to or replaces RLX features)</i>
19" alloy wheels
Tires: P245/40 R19
Acoustic glass
Acura Navigation System with Voice Recognition™ and 8" display
Acura/ELS Surround® Premium Audio System with CD/AM/FM/SiriusXM™† tuner, MP3/Windows Media® Audio compatibility, auxiliary input jack, USB device connector and 14 speakers
AcuraLink™ connectivity system
Blind Spot Information system** (BSI)
Hard disk drive (HDD) media storage
Heated steering wheel
Milano leather-trimmed interior
Power folding side mirrors
Rain-sensing windshield wipers
Woodgrain interior trim

ELITE PACKAGE	
<i>(Adds to or replaces Technology Package features)</i>	
Adaptive Cruise Control (ACC) with Low-Speed Follow**	
Auto-dimming side mirrors	
Cargo volume	417 litres
Collision Mitigation Braking System™ (CMBS®)	
Heated rear seats	
Krell ultra-premium audio system with CD/AM/FM/SiriusXM™† tuner, MP3/Windows Media® Audio compatibility, auxiliary input jack, USB device connector and 14 speakers	
Lane Keeping Assist System (LKAS)	
Parking sensors	
Power rear sunshade	
Rear side sunshades	
Ventilated front seats	

\*Based on 2013 EnerGuide Fuel Consumption Guide ratings published by Natural Resources Canada. Transport Canada approved test methods used. Your actual fuel consumption will vary based on driving habits and other factors – use for comparison only.

\*\*Does not replace the driver's responsibility to exercise due care while driving.

\*\*\*HomeLink® can be programmed with codes of up to three remote-control devices (e.g., garage-door opener, home security system, etc.). Additional control devices not provided by Honda may be required.

†Includes a no-charge trial of 3 months, beyond which service fees apply. Available in 10 Canadian provinces and 48 contiguous U.S. states. See terms and conditions at [www.siriusxm.ca](http://www.siriusxm.ca).

††Only compatible with certain devices.

‡Text message and e-mail functions are only compatible with certain devices.

ACURA  
MAKE IT YOURS.

*Choose from an array of genuine Acura accessories  
that give you the practical luxuries and advanced styling  
that will bring you together with your machine.*

**RLX PROTECTION PACKAGE**

All-weather floor mats  
Rear splash guards  
Trunk tray

**RLX REMOTE ENGINE STARTER KIT**

Remote engine starter attachment  
Remote engine starter base  
Remote engine starter key fob

Accessories listed in the packages may also  
be added individually to your RLX.

**ACCESSORIES AVAILABLE**

All-weather floor mats  
Ashtray – Cup holder style  
Body side moulding  
Car cover  
Cargo net  
Deck lid spoiler  
Door edge film  
Door sill trim – Illuminated  
Engine block heater  
Hood edge deflector  
Rear bumper appliqué  
Rear splash guards  
Trunk carpet mat  
Trunk tray  
Trunk edge and bumper protector  
Wheel lock – Exposed



U.S. model shown.

**CAR COVER**



BODY SIDE MOULDING



TRUNK CARPET MAT



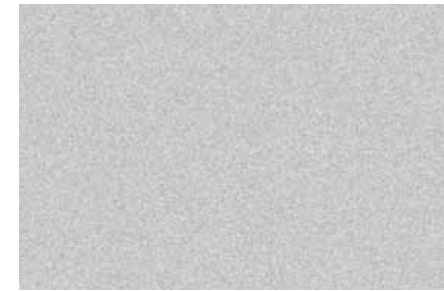
ALL-WEATHER FLOOR MATS

RLX

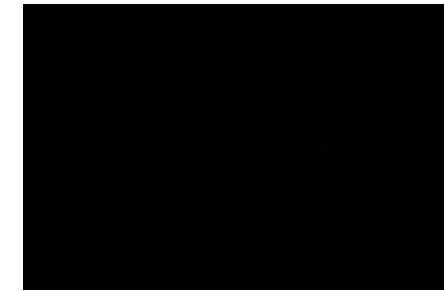
COLOUR AND TRIM GUIDE

Our colour and trim range is an extension of our commitment to craftsmanship and elegance. A palette of timeless exterior colours is complemented by equally refined interior options and a superior grade of leather trims. These are the finishing touches that elevate your relationship with your Acura, and the road, at every turn.

EXTERIOR RLX



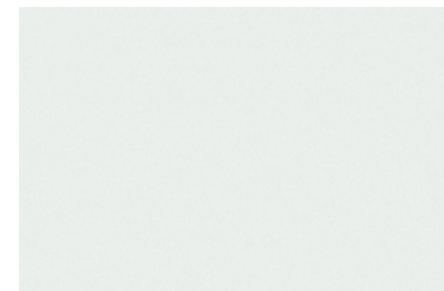
Alabaster Silver Metallic • NH-700M



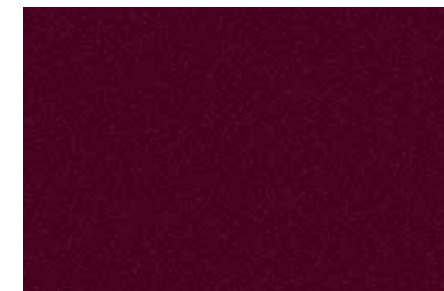
Crystal Black Pearl • NH-731P



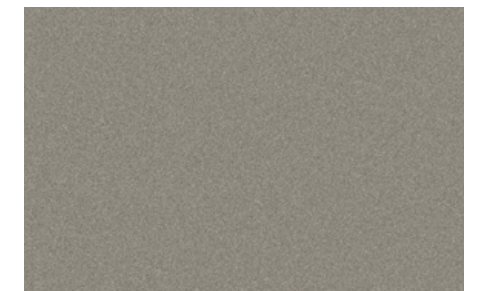
Graphite Luster Metallic • NH-782M



Bellanova White Pearl • NH-788P

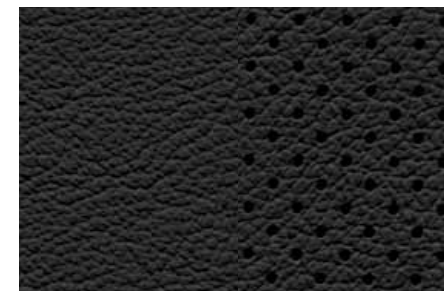


Pomegranate Pearl • R-540P



Gilded Pewter Metallic • YR-596M

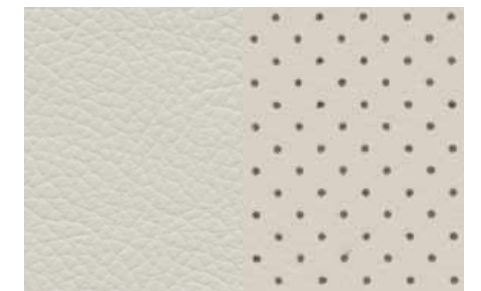
INTERIOR RLX



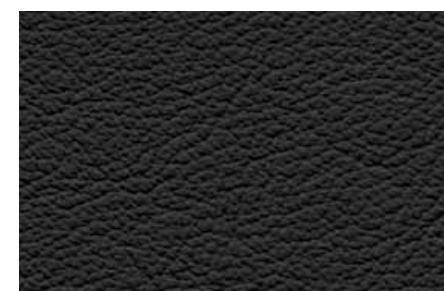
Ebony Milano Leather



Greystone Milano Leather



Seacoast Milano Leather



Ebony Leatherette

EXTERIOR COLOURS	RLX	TECHNOLOGY PACKAGE	ELITE PACKAGE
Alabaster Silver Metallic • NH-700M	Ebony Leatherette	Ebony or Greystone Milano Leather	Ebony Milano Leather
Crystal Black Pearl • NH-731P	Ebony Leatherette	Ebony, Greystone or Seacoast Milano Leather	Ebony, Greystone or Seacoast Milano Leather
Graphite Luster Metallic • NH-782M	Ebony Leatherette	Ebony or Greystone Milano Leather	Ebony or Greystone Milano Leather
Bellanova White Pearl • NH-788P	Ebony Leatherette	Ebony or Seacoast Milano Leather	Seacoast Milano Leather
Pomegranate Pearl • R-540P	N/A	Seacoast Milano Leather	Seacoast Milano Leather
Gilded Pewter Metallic • YR-596M	N/A	Seacoast Milano Leather	Seacoast Milano Leather





At Acura, when innovation and performance meet purpose, remarkable things can be achieved. Through our commitment and continued involvement with events and organizations across Canada, we seek to create engaging and inspiring experiences for our customers and our community. Because at Acura we believe exhilaration goes beyond the driver's seat.



PRESENTING SPONSOR  
CANADIAN BROADCAST

Acura is honoured to be the Canadian broadcast sponsor of golf's most historic and time-honoured tournament. The Masters is golf's first major open of the season and is famous for its ceremonial "Green Jacket" winner's presentation.

Driving a luxury vehicle should go beyond engineering and amenities. That's why Acura is committed to ensuring your ownership experience is equally luxurious. New Acura owners benefit from four-year 24-hour Roadside Assistance, which includes Dispatch Emergency Roadside Service, Emergency Lockout Service and Traffic Accident Services. See your Acura Retailer for details.

#### WARRANTY

Your new Acura vehicle comes with the following warranties: Major Component – 5-year/100,000-km limited warranty • Vehicle – 4-year/80,000-km Distributor's limited warranty • Rust Perforation – 5-year unlimited-distance warranty • Surface Corrosion – 4-year/80,000-km • Accessories – 4-year/80,000-km limited warranty (when installed by an authorized Acura Retailer at time of new vehicle delivery).

Regular maintenance items and parts are subject to normal wear and replacement, and are not covered by warranty. Certain other items are excluded and certain conditions apply. See your Acura Retailer for details.

#### ACURA PLUS

Extend your worry-free ownership experience by purchasing additional coverage. Choose from Acura's flexible selection of Mechanical Coverage that extends up to 8 years or 200,000 km, whichever comes first. See your Acura Retailer for details.

#### LEASING AND FINANCING

Owning your Acura is easy. See your Acura Retailer for complete details on Conventional Financing.\*

*\*A genuine service of Acura Financial Services. Conditions, restrictions and prepayment requirements might apply O.A.C.*

2014 RLX model shown. Specifications, features, illustrations and equipment shown in this catalogue are based upon the latest available information at the time of publication. Remember your seat belts. It's a simple fact of life. Although descriptions are believed to be correct, accuracy cannot be guaranteed. Honda Canada Inc. reserves the right to make changes at any time, without notice or obligation, in colours, specifications, accessories, materials and models. Some vehicles are shown with optional equipment. Some vehicles shown are U.S. models. Canadian specifications may vary. Map Database of the Acura Navigation System covers major metropolitan areas in southern Canada and the 48 contiguous U.S. states. For a list of current detailed coverage areas, refer to the Acura web site, [www.acura.ca](http://www.acura.ca). Aha, the Aha logo, and the Aha trade dress are trademarks or registered trademarks of HARMAN International Industries. Bluetooth is a registered trademark of SIG Inc. ELS Surround is a registered trademark of Panasonic Corporation of North America. HomeLink and HandsFreeLink are registered trademarks or trademarks of Johnson Controls Technology. HomeLink can be programmed with codes of up to three remote-control devices (e.g., garage-door opener, home security system, etc.). Additional control devices not provided by Acura may be required. Whatever/Whenever is a registered trademark of Starwood Hotels & Resorts Worldwide Inc. Windows Media is a registered trademark of Microsoft Corporation. © 2012 Sirius XM Canada Inc. "SiriusXM", the SiriusXM logo, channel names and logos are trademarks of SiriusXM Radio Inc. and are used under license. Zagat is a registered trademark of Zagat Survey, LLC. Available Krell Audio System is a premium audio system developed by Acura in conjunction with Krell Industries. Krell Industries is a trademark of Krell Industries, LLC. [www.krellonline.com](http://www.krellonline.com). Acura, AcuraLink, RLX, i-VTEC, ACE, Advanced Compatibility Engineering, Acura Navigation System with Voice Recognition, Automated Appointments, Collision Mitigation Braking System, CMBS, Drive-by-Wire Throttle System, Jewel Eye, Maintenance Minder, On-Demand Multi-Use Display, Real-Time Traffic, Precision All Wheel Steer, Smartvent, SportShift, Variable Cylinder Management, VCM and VSA are trademarks of Honda Motor Co., Ltd. Acura, a division of Honda Canada Inc., 180 Honda Boulevard, Markham, Ontario, Canada L6C 0H9. 1-888-9-ACURA-9. [www.acura.ca](http://www.acura.ca).