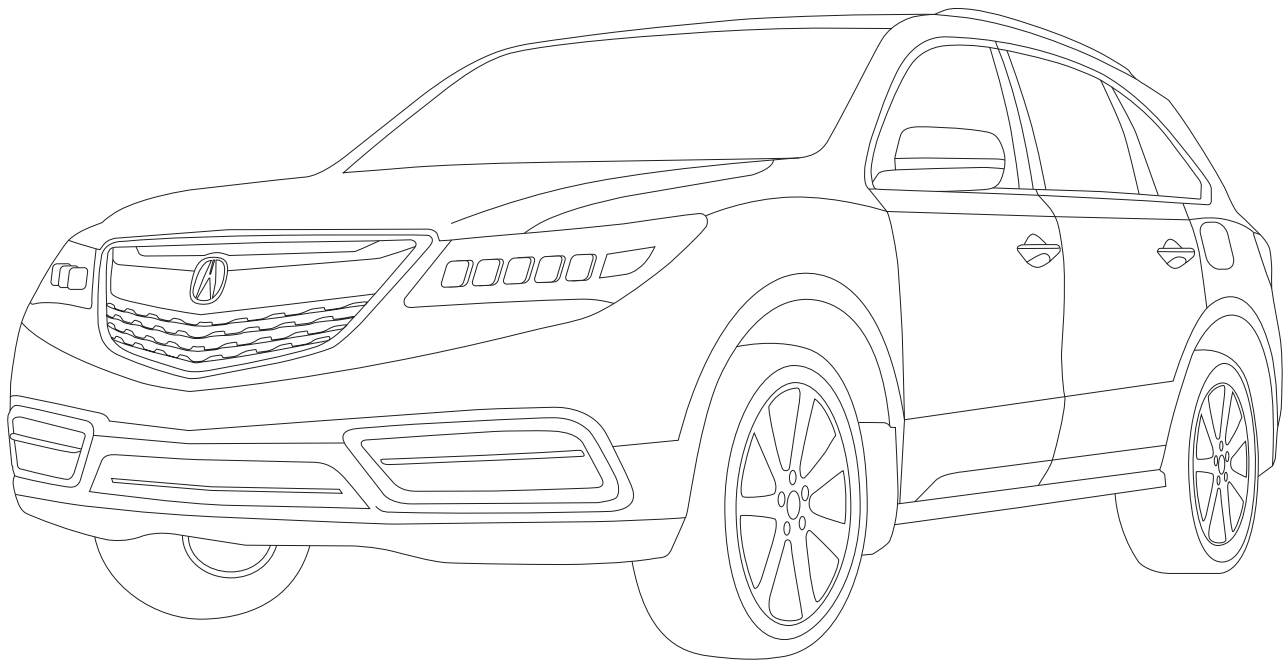


2016 | MDX



2016 MDX





The 2016 MDX once again sets a benchmark for the luxury SUV segment and redefines the driver's experience in a vehicle built for utility. The sophisticated, yet muscular "Executive Aero Sculpture" exterior design and interior cabin, equally stocked with technology and elegance, let you know at first glance that luxury was top of mind in every aspect of the MDX. However, once you're behind the wheel, you'll immediately realize that performance was never reduced to a second thought.

REDEFINE



PERFORMANCE

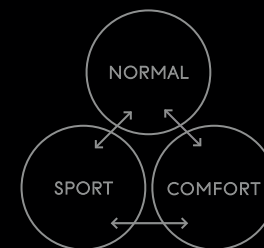
A DRIVER'S SUV

The need for a utility vehicle does not replace the want of an exhilarating drive. That reality was never lost when engineering the 2016 MDX and its direct-injected, 3.5-litre, i-VTEC® V6 engine with Variable Cylinder Management®. The result is an SUV that you'll not only want to drive—but need to drive.



9-SPEED SEQUENTIAL SPORTSHIFT® WITH PADDLE SHIFTERS

All-new for 2016 is a Sequential Sportshift® 9-speed automatic transmission. More gears allow for the engine to operate at peak performance for optimal acceleration. And when the paddle shifters change gears, they allow for shifting 5 times quicker than the 2015 MDX—an immediate response with smooth delivery.



INTEGRATED DYNAMIC SYSTEM

The Integrated Dynamic System (IDS) is designed to allow the MDX to complement the personality of its driver. Choose between Normal, Sport and Comfort modes and the Integrated Dynamic System will adjust the steering effort, throttle response, SH-AWD®, even the sound of the engine, to match the mood you want to set for the drive ahead.



VARIABLE CYLINDER MANAGEMENT®

Variable Cylinder Management is engineered to help the MDX realize improved fuel efficiency by automatically changing the V6 engine to run on six or three cylinders, depending on driving conditions. The cylinder activation is designed to be seamless and not felt by driver or passengers.

§ None of the features we describe are intended to replace the driver's responsibility to exercise due care while driving. Drivers should not use handheld devices or operate certain vehicle features unless it is safe and legal to do so. Some features have technological limitations. For additional feature information, limitations and restrictions, please visit www.acura.ca/disclaimers and refer to the vehicle's owner's manual.



HANDLING

TAKING HANDLING TO A HIGHER GROUND

Tested and tuned at the famous Nürburgring track in Germany, the fully independent front and rear suspension helps give the MDX the smooth ride quality that you'd expect from an SUV, with the enhanced control and reactive handling that you admire in a high-performance vehicle.

SH-AWD^{®5}

Acura's groundbreaking Super Handling All-Wheel Drive™ (SH-AWD) system is even more efficient than on the 2015 MDX and continues to be the core of the MDX's handling capability. Standard on every MDX, performance-oriented SH-AWD is designed to sense driving conditions and react accordingly by sending up to 70% of the torque to the rear wheels, from where it can then be sent to each individual rear wheel that has the most traction. This system inspires confidence, no matter what the driving intention or the road condition.

AGILE HANDLING ASSIST

The MDX Agile Handling Assist system is engineered to complement the SH-AWD system by helping to improve cornering ability. In addition, it uses the components of the Vehicle Stability Assist (VSA[®]) system to further improve handling. While VSA brakes individual wheels to avoid oversteer or understeer, Agile Handling Assist uses active braking—usually on an inside wheel—to help you smoothly and easily trace the desired line through a curve.

AMPLITUDE REACTIVE DAMPERS

Also featured on the MDX are Acura's Amplitude Reactive Dampers, which include one internal spring to absorb road irregularities and a second stiffer spring to control larger body movements.

⁵ None of the features we describe are intended to replace the driver's responsibility to exercise due care while driving. Drivers should not use handheld devices or operate certain vehicle features unless it is safe and legal to do so. Some features have technological limitations. For additional feature information, limitations and restrictions, please visit www.acura.ca/disclaimers and refer to the vehicle's owner's manual.



DESIGN

ILLUMINATE

JEWEL EYE™ LED HEADLIGHTS

Acura's signature Jewel Eye headlight system presents an array of lighting with a total of ten separate high-intensity LED lamps and utilizes ultra-reflective optical lenses to provide brighter, whiter and more powerful, down-the-road illumination. The striking visual impact with precise focus allows the driver to see further than regular halogen bulbs. Plus, LED fog lights are part of the Elite Package, adding even more light to the visual impact.

LED TAIL LIGHTS

The rear LED tail lights help to ensure that other cars can see you as well. They come on quicker and last longer than regular lights for added safety, while also providing a sleek, sophisticated exterior detail.



INTERIOR

CABIN COMFORTS

Intelligent design and refined style create a spacious, versatile and comfortable MDX cabin. Soft leather-trimmed seating and available genuine wood trim will welcome driver and passengers on board, while ample legroom, climate control and advanced noise reduction all help to ensure a pleasant trip.

START YOUR ENGINES

The standard bi-directional key fob allows you to communicate with your MDX. When you send a request to your MDX—lock, unlock, rear liftgate open, or engine start—LEDs will light up on the fob confirming that the request was received. In cold weather, the standard remote engine starter will automatically set your car's interior temperature to 22 C, turn on the driver's seat heaters, heat the steering wheel, and actuate all external defrosters, ensuring you get off to a comfortable start, even when the weather isn't.

THE STRONG SILENT TYPE

A quiet ride made even quieter through innovation. Acura's Active Noise Control system cancels out engine noise by countering it with opposing sound frequencies emitted from the sound system. Active Sound Control smoothes out the sound created by the engine itself as it goes through its full rpm cycle.

Acoustic glass, expanding body sealers and a noise-reducing underbody liner round out the MDX's cocoon—making it as composed as it is confident.

CLIMATE CONTROL

A sense of personal comfort is all-encompassing in the MDX. The synchronized tri-zone automatic climate control with air-filtration keeps driver, front passenger and 2nd-row zones each at their own desired temperature. Available ventilated front seats* offer warm-weather comfort while the standard heated front seats and available heated 2nd-row seats deliver additional cold-weather relief.

*Available on the MDX Elite Package.

ONE TOUCH WALK-IN

Simply press the illuminated One Touch Walk-In button and the second-row seats automatically fold and slide to their most forward position, improving third-row access like never before. A four-position recline and extended slide capability on the 2nd-row seats also allows optimal balance between 2nd- and 3rd-row legroom.

HEATED STEERING WHEEL

Available to the Canadian market is a standard heated steering wheel and heated windshield, both helping to make the MDX a true all-season luxury SUV. Even more impressive, they can be activated remotely with the bi-directional remote engine starter key fob for those extra freezing cold days.

CENTRE OF ATTENTION

The centre stack of the MDX features the On-Demand Multi-Use Display.™ This not only puts Acura technology at your fingertips, but it also streamlines the number of hard buttons in the stack. The centre console storage is spacious enough to accommodate a small laptop, or small purse.



INTERIOR

ENTERTAIN

AUDIO

The 2016 MDX features a powerful audio system, with an available Acura/ELS Surround® Audio System capable of delivering up to 546 watts of enriched audio from an array of sources, including tuner, MP3, auxiliary input jack and USB devices. All fed through your choice of a 10 to 12 speaker configuration and controlled with the 7-inch On-Demand Multi-Use Display™—making driver and MDX more in tune than ever before.

VIDEO

The Technology Package features an Acura DVD Entertainment System with a 9-inch display, wireless headsets with personal surround sound, integrated remote control and an auxiliary 2nd-row audio/video input jack. The Elite Package is equipped with an ultra-wide, 16.2-inch split screen display with HDMI® compatibility, perfect for connecting gaming consoles.





TECHNOLOGY

ACURAWATCH™ TECHNOLOGY ABOUNDS

ADAPTIVE CRUISE CONTROL (ACC) WITH LOW-SPEED FOLLOW[§]

The MDX has taken the conventional cruise control system and enhanced its benefits for the driver. Using an advanced radar system hidden discretely behind the front grille, the Adaptive Cruise Control with Low-Speed Follow system is engineered to allow the MDX to independently follow the car in front at a set distance, starting and stopping appropriately with the flow of traffic.

FORWARD COLLISION WARNING (FCW) SYSTEM[§]

The Forward Collision Warning system uses an onboard camera that monitors the gap between you and the car in front of you. If that gap begins to close too quickly, the system is designed to use both audible and visual warnings to inform you to reduce your speed.

COLLISION MITIGATION BRAKING SYSTEM™ (CMBS®)[§]

Innovation that's designed to allow the MDX to react the way you would, even when you don't. The Collision Mitigation Braking System (CMBS) uses a radar transmitter to determine the distance and closing speed of the car directly in front of you and is designed to react accordingly when a programmed threshold is exceeded. Initially, the system warns you with audio and visual alerts. If speed is not reduced, the system is engineered to gently pull your seat belt and automatically begin light braking. If the system still determines an impact is unavoidable, it is designed to automatically apply strong braking to help reduce speed and mitigate the force of the collision.

LANE DEPARTURE WARNING (LDW) SYSTEM[§]

Should the MDX begin to drift out of its lane without a turning signal being applied, the Lane Departure Warning system is designed to trigger both an audible and visual warning to alert the driver. This connection between car and road is achieved through an onboard camera that is designed to monitor the vehicle's lane position at all times.

LANE KEEPING ASSIST SYSTEM (LKAS)[§]

Road Departure Mitigation[§] works with the Acura Lane Keeping Assist System to detect objects on the side of the road and help you avoid them. It builds on conventional lane departure systems to work proactively to help keep the vehicle inside the lane during normal driving conditions. If the car begins to cross lane markings unintentionally, it's engineered to apply light steering torque to return the vehicle to the centre of the lane while a continuous beep alerts the driver.

§ None of the features we describe are intended to replace the driver's responsibility to exercise due care while driving. Drivers should not use handheld devices or operate certain vehicle features unless it is safe and legal to do so. Some features have technological limitations. For additional feature information, limitations and restrictions, please visit www.acura.ca/disclaimers and refer to the vehicle's owner's manual.



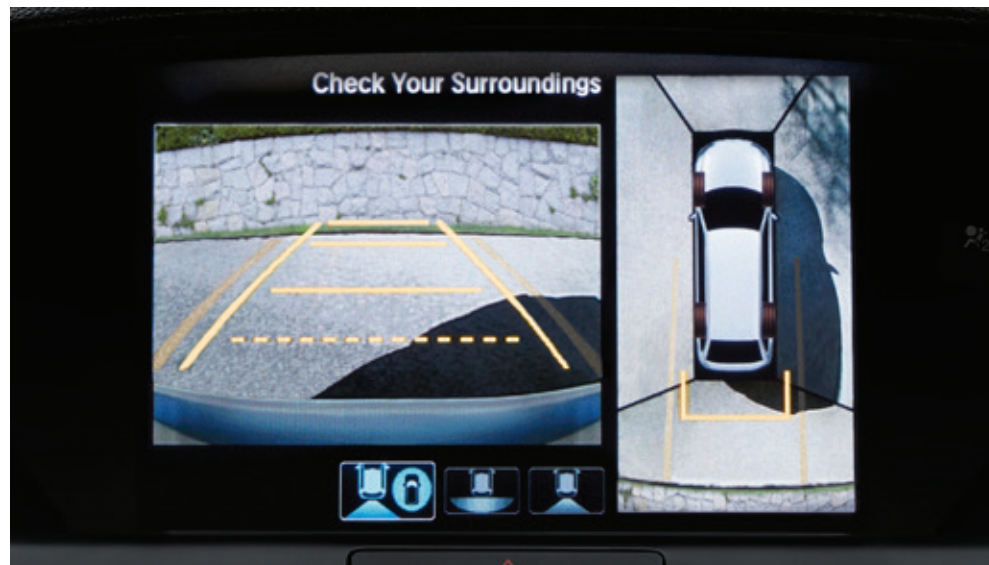
AUTOMOBILE JOURNALISTS
ASSOCIATION OF CANADA

2015 Best New Safety Technology
AcuraWatch™ Driver Assist Features



TECHNOLOGY

A SENSE
OF PERSONAL SPACE



SURROUND VIEW CAMERA SYSTEM[§]

The multi-angle rearview camera with guidelines comes standard on the MDX. Elite models are upgraded with a surround view camera system that is designed to assist you in checking a variety of blind spots when travelling at 12 km/h or less. Using four separate cameras, views of behind, directly in front of, and both front sides of your MDX can be displayed on the navigation screen. The system can also combine all four camera angles together to create a composite 360-degree view of the area around your MDX. In addition, dynamic guidelines on the screen help you assess the distance between objects and see your projected path of travel.

CROSS TRAFFIC MONITOR SYSTEM[§]

Whether backing out of a parking space in a busy lot or on a street, the MDX has your back. With the multi-view rear camera in normal or wide mode, an audible chime and amber arrows in the rear camera monitor alert the driver, when sensors detect approaching cars from either side. An important feature when large vehicles are parked beside you and your view is obstructed.

BLIND SPOT INFORMATION (BSI) SYSTEM[§]

Your MDX expands your field of vision by providing information about vehicles that are in, or about to enter your blind spot when you're passing, being passed, merging, or changing lanes. The available Blind Spot Information system uses radar technology that is designed to detect objects moving as slow as 10 km/h.

[§] None of the features we describe are intended to replace the driver's responsibility to exercise due care while driving. Drivers should not use handheld devices or operate certain vehicle features unless it is safe and legal to do so. Some features have technological limitations. For additional feature information, limitations and restrictions, please visit www.acura.ca/disclaimers and refer to the vehicle's owner's manual.

ACURALINK™ A NEW BAR FOR CONNECTIVITY

Available to MDX drivers is the AcuraLink^{§,*,&} connectivity system, and with it an unprecedented combination of technology and convenience. Using both embedded two-way communications and web-enabled devices, AcuraLink curates a truly digital experience with your MDX.

An On-Demand Multi-Use Display™ touchscreen and one-touch dedicated Link and Assist buttons in the vehicle easily give you access to an array of customizable media, convenience features, emergency services and even 24-hour live concierge operators. The AcuraLink^{§,*,&} Connect app and MyAcura website allow you to connect remotely with your MDX in ways like never before.



NAVIGATION

AcuraLink brings some impressive additions to your Acura Navigation System like Real-Time Traffic™** with surface street traffic information. Depending on your location, you'll also be able to request points of interest via a live concierge agent and have the route sent directly to your navigation screen. Or map locations yourself and upload them to your screen via the MyAcura website, or AcuraLink Connect app.†



ENTERTAINMENT

AcuraLink makes the MDX one of the first Acura vehicles to feature Aha™ by Harman, a cloud-based interface that provides you with thousands of customizable media and connectivity choices. The AcuraLink® Streams app featuring Aha lets you access your desired content on the go. Once you have selected your favourite stations, you can connect iOS and Android smartphones with your MDX through your on-board touchscreen and have immediate access to your favourite internet content, including personalized music, internet radio, podcasts, audiobooks, location-based searches and even have your Facebook® and Twitter® feeds read out loud as you drive.



REMOTE CONTROL

With the AcuraLink^{§,*,&} Connect app, or MyAcura website, you no longer need to be in your MDX to connect with it. Using your web-enabled device, you can remotely lock and unlock doors; use the car finder feature in a crowded lot; even check things such as fuel level, tire pressure and odometer reading from your virtual dashboard. And the connection goes both ways as your MDX can send messages to you via the mobile app, alerting you of an alarm notification for example, even if you're out of town.



EMERGENCY

In the event of an airbag deployment, AcuraLink^{§,*,&} is engineered to automatically send a signal for immediate assistance to your location.† The on-board one-touch Assist button also gives you access to live operator assistance in the case of non-collision emergencies.



MAINTENANCE

Not only will you be notified when your next service is due via the Maintenance Minder™, but the Automated Appointments™ feature allows you to schedule an appointment with your favourite, or local, Acura dealer directly through the AcuraLink^{§,*,&} system.



LIVE CONCIERGE

The AcuraLink^{§,*,&} Premium package gives you access to the most personalized feature of all—access to live concierge agents. One touch puts you in direct voice contact with an Acura concierge who will assist you with virtually anything from finding a point of interest; booking dinner, hotel, or flight reservations; even searching the web for answers for you while you drive.

§None of the features we describe are intended to replace the driver's responsibility to exercise due care while driving. Drivers should not use handheld devices or operate certain vehicle features unless it is safe and legal to do so. Some features have technological limitations. For additional feature information, limitations and restrictions, please visit www.acura.ca/disclaimers and refer to the vehicle's owner's manual.

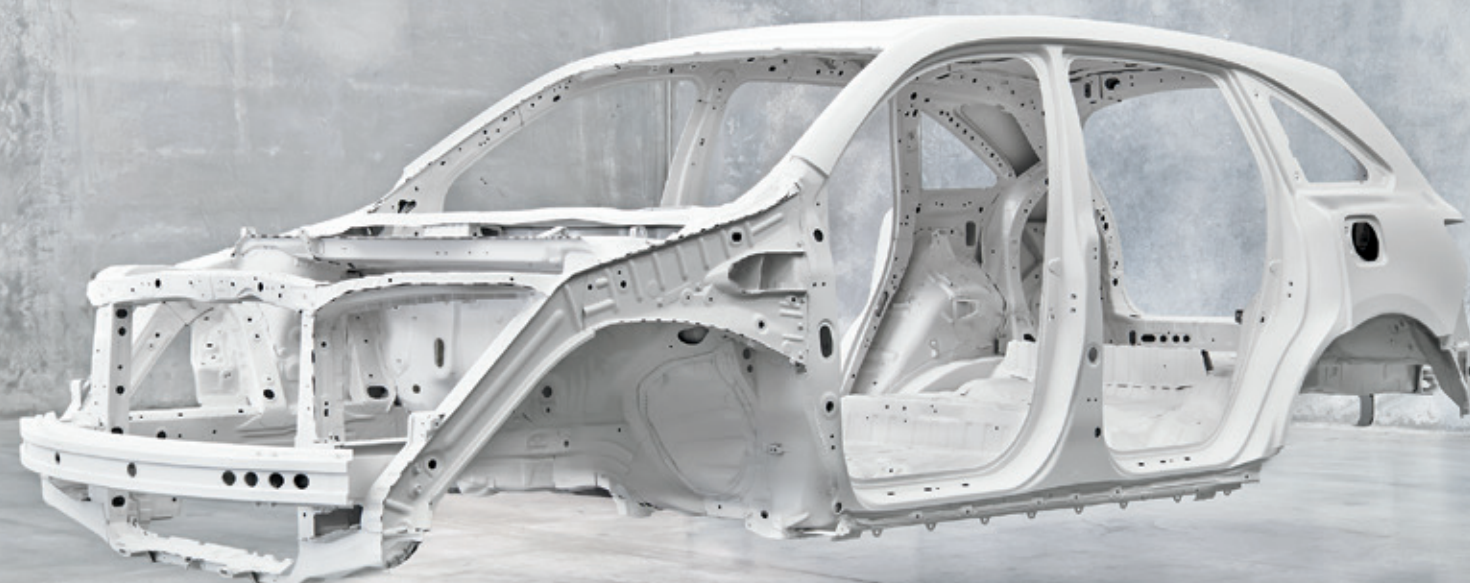
*Only compatible with certain devices and operating systems. Cellular data and/or voice charges may apply, including roaming charges and/or other amounts charged by your wireless carrier.

ΔSubscription required. One year complimentary subscription to AcuraLink Standard, AcuraLink Connect, and AcuraLink Premium included, after which fees, taxes and other charges will apply in order to continue subscription. Ask your dealer for full terms and conditions.

**Real-Time Traffic™ is only available in 13 of Canada's largest metropolitan areas and is dependent upon data location reporting of connected vehicles.

†Vehicle or the compatible smartphone tethered via the vehicle's HandsFreeLink Bluetooth connection needs to have cellular reception.

The MDX driving experience is further enhanced by the peace of mind you'll have from knowing that you and your passengers are surrounded by an extensive number of both standard safety features and available innovative Acura safety technologies.



VEHICLE STABILITY ASSIST (VSA)[§]

The advanced co-operative Vehicle Stability Assist (VSA) system with Traction Control is engineered to automatically detect and correct understeer or oversteer situations, sometimes before you're even aware there's a problem. The system intuitively analyzes the conditions and is designed to then reduce throttle and/or apply braking to individual wheels. Should a loss of traction occur on a slippery surface, Traction Control is engineered to help compensate to get you safely underway.

ANTI-LOCK BRAKES

The Anti-lock Braking System (ABS)[§] helps you maintain steering control when braking hard on wet, slippery or loose surfaces, while Electronic Brake-force Distribution (EBD) balances braking forces at each wheel to help compensate for cargo and passenger weight distribution inside the cabin.

AIRBAGS

A significant level of safety is achieved with seven standard airbags. The MDX cabin features 3-rd row side curtain airbags with a sensor engineered to deploy in the event of a rollover, dual-stage, dual threshold front airbags (SRS) and Smartvent™ side airbags.

ACE™ BODY STRUCTURE

The innovative Advanced Compatibility Engineering™ (ACE) body structure adopts a high-tensile, high-efficiency steel body structure to help provide enhanced protection from a multi-directional collision. ACE reduces the concentrated force of a frontal impact by absorbing energy over a large area and dispersing it away from the occupants of the cabin. Additionally, ACE is designed to help reduce occupant injuries caused by misalignment in collisions between vehicles of different sizes.

TIRE PRESSURE MONITORING SYSTEM[†]

To enhance your peace of mind, the Tire Pressure Monitoring System (TPMS) continually monitors each tire and displays the precise pressure of each individual tire in the instrument panel. If a tire loses pressure, a warning appears, indicating the specific tire that requires attention. When filling a tire, the new tire fill assist feature notifies you with an audible alert when the recommended tire pressure is met, reducing the amount of time you have to spend outside your MDX on cold wintery days.

§ None of the features we describe are intended to replace the driver's responsibility to exercise due care while driving. Drivers should not use handheld devices or operate certain vehicle features unless it is safe and legal to do so. Some features have technological limitations. For additional feature information, limitations and restrictions, please visit www.acura.ca/disclaimers and refer to the vehicle's owner's manual.

† For optimal tire wear and performance, tire pressure should be checked regularly with a gauge. Do not rely solely on the monitor system.

ENGINE	
Engine	3.5-litre, Direct Injection SOHC, i-VTEC® V6
Horsepower	290 hp @ 6200 rpm
Torque	267 lb.-ft. @ 4500 rpm
Displacement	3471 cc
Bore and stroke	89 x 93 mm
Emissions	Tier 2 Bin 5
Compression ratio	11.5:1
Variable Cylinder Management® (VCM®)	
Recommended fuel	Premium unleaded
Horsepower and torque calculations reflect SAE net, Rev. 08/04, SAE J1349 procedures.	

DRIVETRAIN
9-speed automatic transmission with Sequential SportShift® paddle shifters and Grade Logic Control
Integrated Dynamic System (IDS)
Hill Start Assist [‡]
Super Handling All-Wheel Drive™ (SH-AWD®) [‡]
Towing capacity: available in 3500 lb. (1588 kg) or 5000 lb. (2268 kg)

SAFETY FEATURES
Advanced Compatibility Engineering™ (ACE™) body structure
Anti-lock Braking System (ABS) [‡] with Electronic Brake-force Distribution (EBD) and Brake Assist
Battery management system (BMS)
Child-seat tethers in 2nd row (3), 3rd row (2)
Childproof rear door locks
Collision Mitigation Braking System™ [‡] (CMBS®)
Driver’s side knee airbag
Dual-stage, dual-threshold front airbags (SRS)
Forward Collision Warning (FCW) system [‡]
Immobilizer Theft-Deterrent System
Lane Departure Warning (LDW) system [‡]
Lane Keeping Assist System [‡] (LKAS)
Lower Anchors and Tethers for Children (LATCH) child-seat mounting system positions in 2nd-row (3)
Road Departure Mitigation (RDM™) system [‡]
Security system
Smartvent™ side airbags
Three-row side curtain airbags with rollover sensor
Tire Pressure Monitoring System [‡] (TPMS) with location and pressure indicators and tire fill assist
Trailer Stability Assist™
Vehicle Stability Assist (VSA®) [‡] with Traction Control

CHASSIS
18" alloy wheels
Agile Handling Assist
Amplitude Reactive Dampers
Electric power-assisted rack-and-pinion steering (EPS)
Multi-link independent rear suspension
Power-assisted, ventilated front disc/drum-in-disc rear brakes
Strut front independent suspension
Tires: P245/60 R18 all-season

CAPACITIES	
Maximum cargo volume, 2nd- and 3rd-row seats folded down	2575 litres
Maximum cargo volume, 3rd-row seats folded down	1277 litres
Maximum cargo volume, behind 3rd row	447 litres
Fuel tank capacity	73.8 litres
Passenger volume	3747 litres
Windshield washer fluid tank	5.8 litres

SEATING & TRIM
50/50 split flat-folding 3rd-row bench seat
Smart Slide 2nd-row seat with One Touch Walk-In
10-way power adjustable driver’s seat including 2-way power lumbar support and 2-position memory
8-way power adjustable front passenger’s seat
Heated front seats
Heated steering wheel
Leather-trimmed interior

EXTERIOR
Heated power-adjusting side mirrors with driver recognition, reverse gear tilt-down, integrated turn indicators and expanded view driver’s mirror
Chrome door handles
Front and rear splash guards
Headlamp washers
Heated windshield
Intermittent rear window wiper/washer
Jewel Eye™ LED headlights
LED taillamps
Power moonroof with tilt feature and auto-open/close
Tinted glass
Variable intermittent windshield wipers
Wiper-linked headlight system

EXTERIOR DIMENSIONS	
Curb weight (MDX/Navigation/Technology/Elite)	1907/1913/1915/1954 kg
Weight distribution, front/rear (MDX/Navigation/Technology/Elite)	1106/801//1110/808//1111/804//1128/817 kg
Gross vehicle weight rating	2575 kg
Ground clearance	185 mm
Height (includes antenna)	1716 mm
Length	4917 mm
Track – front/rear	1684/1684 mm
Turning diameter – wheel centre/curb-to-curb	5.75 m/11.79 m
Wheelbase	2820 mm
Width – no mirrors	1962 mm

INTERIOR DIMENSIONS	
Headroom – 1st/2nd/3rd row	969/973/904 mm
Hip room – 1st/2nd/3rd row	1498/1469/1031 mm
Legroom – 1st/2nd/3rd row	1055/927/697 mm
Shoulder room – 1st/2nd/3rd row	1551/1502/1390 mm

FUEL ECONOMY	
City/Hwy/Combined	12.7/9.1/11.1 litres/100 km*
City/Hwy/Combined (Elite Package)	12.2/9.1/10.7 litres/100 km*

COMFORT & CONVENIENCE
12-volt power outlet
Acoustic glass
Active Noise Control (ANC)/Active Sound Control (ASC)
Adaptive Cruise Control (ACC) with Low-Speed Follow [‡]
Ambient cabin and door handle lighting
Ambient driver’s and front passenger’s footwell lighting
Auto-dimming rearview mirror
Multi-angle rearview camera [‡] with guidelines
Cargo area tie-down anchors (4)
Centre console
Colour TFT meter display
Driver’s and front passenger’s illuminated vanity mirrors
Driver’s and front passenger’s seatback pockets
Exterior temperature indicator
HandsFreeLink™.Bluetooth® wireless mobile phone interface ^{‡,**} with steering wheel-mounted controls
HomeLink® remote system***
Maintenance Minder™ system
On-Demand Multi-Use Display™
One-touch directional signals
Power tailgate
Power tilt and telescoping steering column
Power windows with driver’s and front passenger’s auto-up/down, auto-reverse and key-off operation
Keyless Access System
Remote engine starter (bi-directional)
Remote-linked 2-position memory system for driver’s seat, steering column, side mirrors and climate control
Pushbutton start
Steering wheel-mounted audio, phone, MID and cruise controls
Tri-zone front and rear synchronized automatic climate control with humidity control and air-filtration system

ENTERTAINMENT
432-watt audio system with AM/FM/CD/SiriusXM™ [™] tuner, MP3/Windows Media® Audio compatibility and 8 speakers including subwoofer
Bluetooth® Streaming Audio**
MP3/auxiliary input jack
Siri Eyes Free compatibility ^{‡,**}
SMS text message / E-mail function**
USB device connector

EXTERIOR EQUIPMENT
18" alloy wheels
Acoustic glass
Active Noise Control (ANC)/Active Sound Control (ASC)
Adaptive Cruise Control (ACC) with Low-Speed Follow [‡]
Ambient cabin and door handle lighting
Ambient driver’s and front passenger’s footwell lighting
Auto-dimming rearview mirror
Multi-angle rearview camera [‡] with guidelines
Cargo area tie-down anchors (4)
Centre console
Colour TFT meter display
Driver’s and front passenger’s illuminated vanity mirrors
Driver’s and front passenger’s seatback pockets
Exterior temperature indicator
HandsFreeLink™.Bluetooth® wireless mobile phone interface ^{‡,**} with steering wheel-mounted controls
HomeLink® remote system***
Maintenance Minder™ system
On-Demand Multi-Use Display™
One-touch directional signals
Power tailgate
Power tilt and telescoping steering column
Power windows with driver’s and front passenger’s auto-up/down, auto-reverse and key-off operation
Keyless Access System
Remote engine starter (bi-directional)
Remote-linked 2-position memory system for driver’s seat, steering column, side mirrors and climate control
Pushbutton start
Steering wheel-mounted audio, phone, MID and cruise controls
Tri-zone front and rear synchronized automatic climate control with humidity control and air-filtration system

§None of the features we describe are intended to replace the driver’s responsibility to exercise due care while driving. Drivers should not use handheld devices or operate certain vehicle features unless it is safe and legal to do so. Some features have technological limitations. For additional feature information, limitations and restrictions, please visit www.acura.ca/disclaimers and refer to the vehicle’s owner’s manual.

†Only available in certain areas. Includes a no-charge trial of three months.

‡For optimal tire wear and performance, tire pressure should be checked regularly with a gauge. Do not rely solely on the monitor system.

‡‡Map database covers major metropolitan areas in Canada and 48 contiguous U.S. states.

NAVIGATION PACKAGE (Adds to MDX features)
19" alloy wheels
Tires: P245/55 R19 all-season
Acra Navigation System with Voice Recognition™ ^{‡,**} and 8" display
Acura/ELS Surround® 501-watt Premium Audio System with AM/FM/SiriusXM™ [™] tuner, MP3/Windows Media® Audio compatibility, DTS®, Dolby® Pro Logic™ II and 10 speakers including subwoofer
AcuraLink™ ^{‡,**,^} connectivity system
Blind Spot Information system [‡] (BSI)
Cross Traffic Monitor system [‡]
Hard disk drive (HDD) media storage
Perimeter/approach puddle lights
Rain-sensing windshield wipers
Tri-zone front and rear synchronized automatic climate control with humidity control and air-filtration system and sun position detection system

TECHNOLOGY PACKAGE (Adds to Navigation Package)
Auto-dimming power folding side mirrors
Acura DVD Entertainment System with 9" display
Acura/ELS Surround® 529-watt Premium Audio System with AM/FM/SiriusXM™ [™] tuner, MP3/Windows Media® Audio compatibility, DTS®, Dolby® Pro Logic™ II and 11 speakers including subwoofer
Auto-levelling front headlamps
Heated 2nd-row seats
Keyless Access System for rear doors
Perforated Premium Milano leather-trimmed interior
Rear side sunshades
AC power outlet (115-volt)

ELITE PACKAGE (Adds to Technology Package)
Acura DVD Ultrawide Rear Entertainment System with 16.2-inch display and HDMI® (High-Definition Multimedia Interface) input jack
Acura/ELS Surround® 546-watt Premium Audio System with AM/FM/SiriusXM™ [™] tuner, MP3/Windows Media® Audio compatibility, DTS®, Dolby® Pro Logic™ II and 12 speakers including subwoofer
Engine idle stop-start feature
Front and rear parking sensors
Genuine olive ash trim
10-way power adjustable passenger’s seat including 2-way power lumbar support
LED fog lights
Roof rails
Surround view camera system [‡]
Ventilated front seats

* Estimated fuel economy based on Government of Canada’s new 5-cycle testing method. Your actual fuel consumption will vary based on driving habits and other factors – use for comparison only. For more information on 5-cycle testing, visit <http://vehicles.nrcan.gc.ca>

** Only compatible with certain devices and operating systems. Cellular data and/or voice charges may apply, including roaming charges and/or other amounts charged by your wireless carrier.

***HomeLink® can be programmed with codes of up to three remote-control devices (e.g., garage-door opener, home security system, etc.).

Δ Subscription required. One year complimentary subscription to AcuraLink Standard, AcuraLink Connect, and AcuraLink Premium included, after which fees, taxes and other charges will apply in order to continue subscription. Ask your dealer for full terms and conditions.

COLOUR & TRIM

Our colour and trim range is an extension of our commitment to craftsmanship and elegance. A palette of timeless exterior colours is complemented by equally refined interior options and a superior grade of leather and fabric trims. These are the finishing touches that elevate your relationship with your Acura, and the road, at every turn.

EXTERIOR COLOURS	MDX	NAVIGATION PACKAGE	TECHNOLOGY PACKAGE	ELITE PACKAGE
CRYSTAL BLACK PEARL NH-731P	Ebony Leather	Ebony or Parchment Leather	Ebony or Parchment Leather	Ebony or Parchment Leather
DARK CHERRY PEARL R-529P	N/A	Parchment Leather	Parchment Leather	Parchment Leather
FOREST MIST METALLIC G-537M	N/A	Parchment Leather	Parchment Leather	Parchment Leather
GRAPHITE LUSTER METALLIC NH-782M	Ebony Leather	Ebony Leather	Ebony Leather	Ebony Leather
LUNAR SILVER METALLIC NH-830M	Ebony Leather	Ebony Leather	Ebony Leather	Ebony Leather
OBSIDIAN BLUE PEARL B-588P	N/A	Greystone Leather	Greystone Leather	Greystone Leather
WHITE DIAMOND PEARL NH-603P	Ebony Leather	Ebony or Parchment Leather	Ebony or Parchment Leather	Ebony or Parchment Leather

COLOUR & TRIM

EXTERIOR MDX



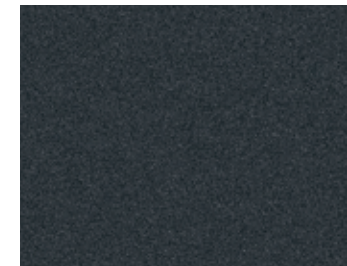
CRYSTAL BLACK PEARL NH-731P



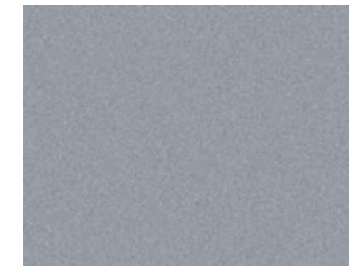
DARK CHERRY PEARL R-529P



FOREST MIST METALLIC G-537M



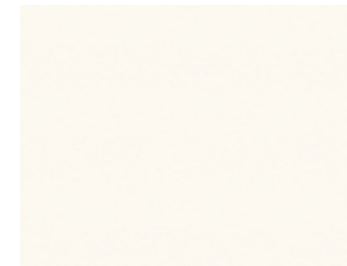
GRAPHITE LUSTER METALLIC NH-782M



LUNAR SILVER METALLIC NH-830M

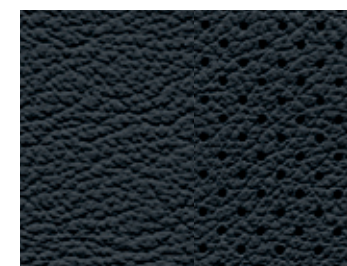


OBSIDIAN BLUE PEARL B-588P

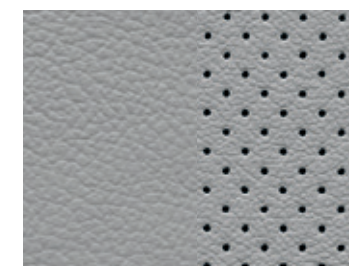


WHITE DIAMOND PEARL NH-603P

INTERIOR MDX



EBONY LEATHER



GREYSTONE LEATHER



PARCHMENT LEATHER

ACCESSORIES

Choose from an array of Acura Genuine Accessories that give you the practical luxuries and advanced styling that will bring you together with your machine.

PROTECTION PACKAGE

All-season floor mats
(Includes 1st- and 2nd-row mats)
Cargo tray, standard (Also available with Cargo tray, folding)

PROTECTION PACKAGE – ADVANCE

All-season floor mats
(Includes 1st-, 2nd- and 3rd-row mats)
Cargo tray, standard (Also available with Cargo tray, folding)

UTILITY PACKAGE

Running boards, advance
Roof rack rails

Accessories listed in the packages may also be added individually to your MDX.

SPORT LUXURY PACKAGE

Roof rack rails
Running boards, advance
LED fog lights

PLATINUM PACKAGE

19" Alloy wheel, SBC
Running boards, advance
Roof rack rails
Roof rack, crossbars

TOWING PACKAGE – 3500 LB.

Trailer hitch
Trailer hitch harness

TOWING PACKAGE – 5000 LB.

Trailer hitch
Trailer hitch harness
ATF cooler

Choose from either the 3500 lb. or 5000 lb. MDX Towing package. Your sales person will be able to help you choose depending on your individual towing needs.

ADDITIONAL ACCESSORIES AVAILABLE

Body side molding
Bumper trim, front and rear
Cargo cover
Cargo liner
Cargo mat
Cargo net
Door edge film
Engine block heater
Hood edge deflector
Illuminated door sill trim
Moonroof visor
Paint pen
Rear back-up sensors
Rear bumper appliqué
Rear bumper protector, metal
Roof rack, bike attachment
Roof rack box, short
Roof rack, ski attachment
Roof rack, snowboard attachment
Running boards, rear step
Rear seat cover, 2nd-row
Trailer hitch ball, 1 7/8" or 2"
Trailer hitch bike attachment
Trailer hitch locking pin
Trunk edge and bumper protector
Wheel locks



ROOF RACK RAILS



ALL-SEASON FLOOR MATS



TOWING PACKAGE – 3500 LB. OR 5000 LB. CAPACITY

At Acura, when innovation and performance meet purpose, remarkable things can be achieved. Through our commitment and continued involvement with events and organizations across Canada, we seek to create engaging and inspiring experiences for our customers and our community. Because at Acura we believe exhilaration goes beyond the driver's seat.



Acura is honoured to be the Canadian broadcast sponsor of golf's most historic and time-honoured tournament. The Masters is golf's first major open of the season and is famous for its ceremonial "Green Jacket" winner's presentation.



Mobile Clinics
Presented by Acura

Acura is proud to be the official vehicle sponsor of the CN Future Links Mobile Golf Clinics. Close to 70,000 junior golfers are expected to participate in the clinics facilitated by the ten provincial golf associations, each of which are provided a current model year MDX from Acura.

Driving a luxury vehicle should go beyond engineering and amenities. That's why Acura is committed to ensuring your ownership experience is equally luxurious. New Acura owners benefit from four-year 24-hour Roadside Assistance, which includes Dispatch Emergency Roadside Service, Emergency Lockout Service and Traffic Accident Services. See your Acura Retailer for details.

WARRANTY

Your new Acura vehicle comes with the following warranties:

- Major Component – 5-year/100,000-km limited warranty
- Vehicle – 4-year/80,000-km Distributor's limited warranty
- Rust Perforation – 5-year unlimited-distance warranty
- Surface Corrosion – 4-year/ 80,000-km
- Accessories – 4-year/80,000-km limited warranty

(when installed by an authorized Acura Retailer at time of new vehicle delivery). Regular maintenance items and parts are subject to normal wear and replacement, and are not covered by warranty. Certain other items are excluded and certain conditions apply. See your Acura Retailer for details.

ACURA PLUS

Extend your worry-free ownership experience by purchasing additional coverage. Choose from Acura's flexible selection of Mechanical Coverage that extends up to 8 years or 200,000 km, whichever comes first. See your Acura Retailer for details.

LEASING AND FINANCING

Owning your Acura is easy. See your Acura Retailer for complete details on Conventional Financing.*

*A genuine service of Acura Financial Services. Conditions, restrictions and prepayment requirements might apply O.A.C.

Always use seat belts and appropriate child seats. Children 12 and under are safest when properly restrained in a rear seat. Acura reminds you to properly secure all items stored in the cargo area.

Acura reserves the right to terminate or change any of the services and/or features at any time, for any reason. Certain features require registration and may transmit to Acura and/or its providers a vehicle's location, operating conditions or other information that may be tied to the vehicle identification number (VIN) and can be combined to create a track of a vehicle. For Acura's data use and privacy policy, see www.acura.ca/owners/acuralink.

2016 MDX model shown. Some of the technologies described in this brochure come with limitations. See owner's manual for complete details. Specifications, features, illustrations and equipment shown in this catalogue are based upon the latest available information at the time of publication. Remember your seat belts. It's a simple fact of life. Although descriptions are believed to be correct, accuracy cannot be guaranteed. Honda Canada Inc. reserves the right to make changes at any time, without notice or obligation, in colours, specifications, accessories, materials and models. Some vehicles are shown with optional equipment. Some vehicles shown are U.S. models. Canadian specifications may vary. Map Database of the Acura Navigation System covers major metropolitan areas in southern Canada and the 48 contiguous U.S. states. For a list of current detailed coverage areas, refer to the Acura web site, www.acura.ca. Aha, the Aha logo, and the Aha trade dress are trademarks or registered trademarks of HARMAN International Industries. Bluetooth is a registered trademark of SIG Inc. Dolby and Pro Logic are registered trademarks or trademarks of Dolby Laboratories. DTS is a registered trademark of DTS, Inc. ELS Surround is a registered trademark of Panasonic Corporation of North America. HDMI is a registered trademark of HDMI Licensing LLC. HomeLink and HandsFreeLink are registered trademarks or trademarks of Johnson Controls Technology. Siri is a trademark of Apple Inc., registered in the U.S. and other countries. Windows Media is a registered trademark of Microsoft Corporation. © 2015 Sirius XM Canada Inc. "SiriusXM", the SiriusXM logo, channel names and logos are trademarks of SiriusXM Radio Inc. and are used under license. Acura, MDX, ACE, Advanced Compatibility Engineering, Acura Navigation System with Voice Recognition, AcuraLink, Automated Appointments, CMBS, Collision Mitigation Braking System, i-VTEC, Jewel Eye, Maintenance Minder, On-Demand Multi-Use Display, RDM, Real-Time Traffic, Smartvent, SportShift, Super Handling All-Wheel Drive, SH-AWD, Trailer Stability Assist, Variable Cylinder Management, VCM and VSA are trademarks of Honda Motor Co., Ltd. Acura, a division of Honda Canada Inc., 180 Honda Boulevard, Markham, Ontario, Canada L6C 0H9. 1-888-9-ACURA-9. www.acura.ca.